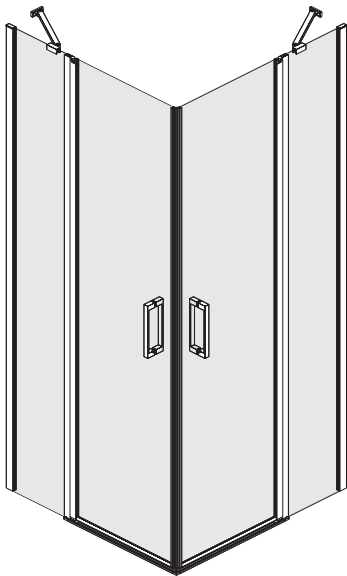
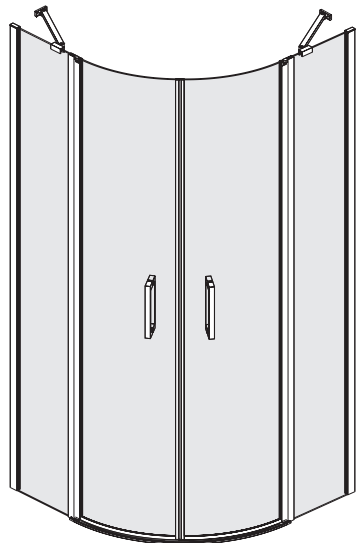


KAEX.3023 / KAEX.3001

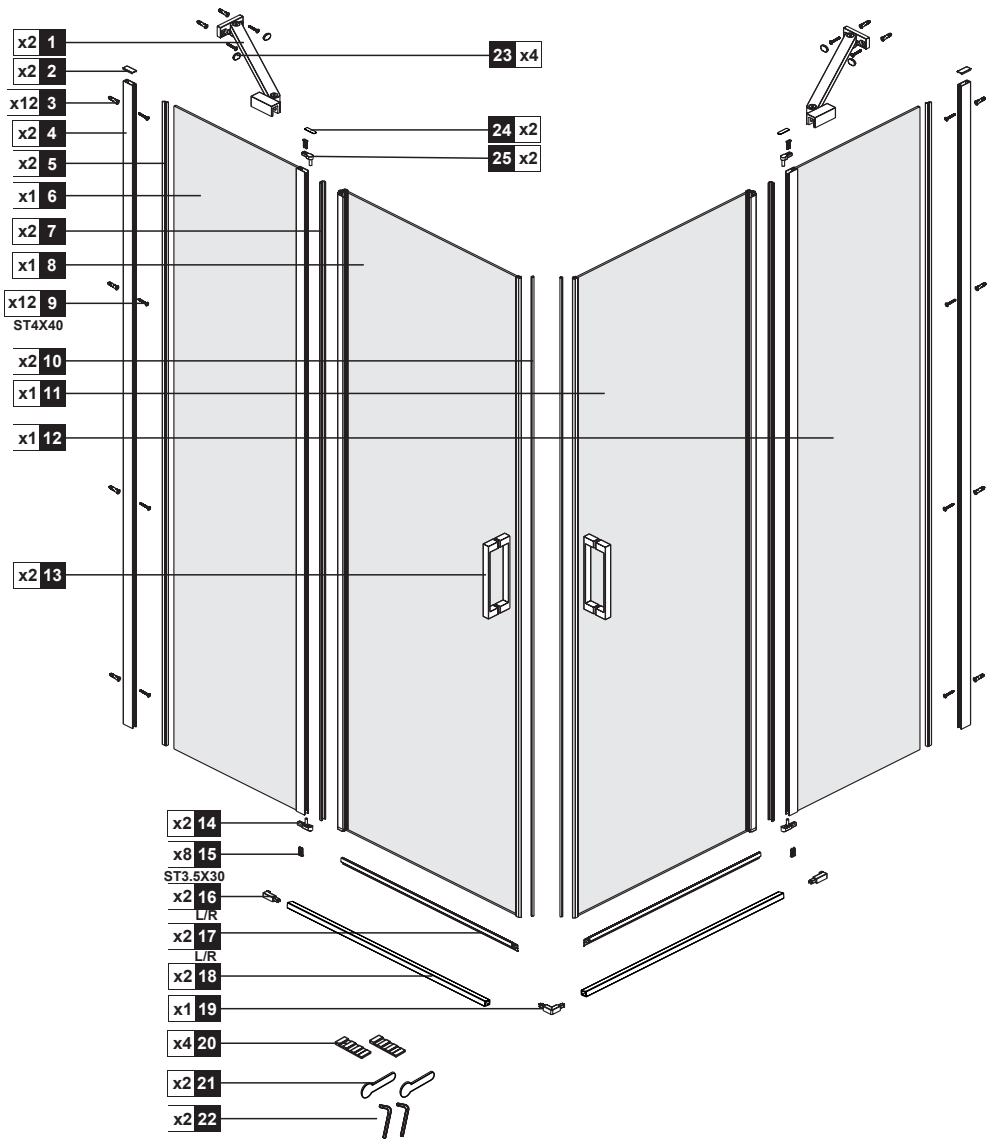
Instrukcja montażu
Installation instructions
Installationsanweisungen
Инструкция по монтажу

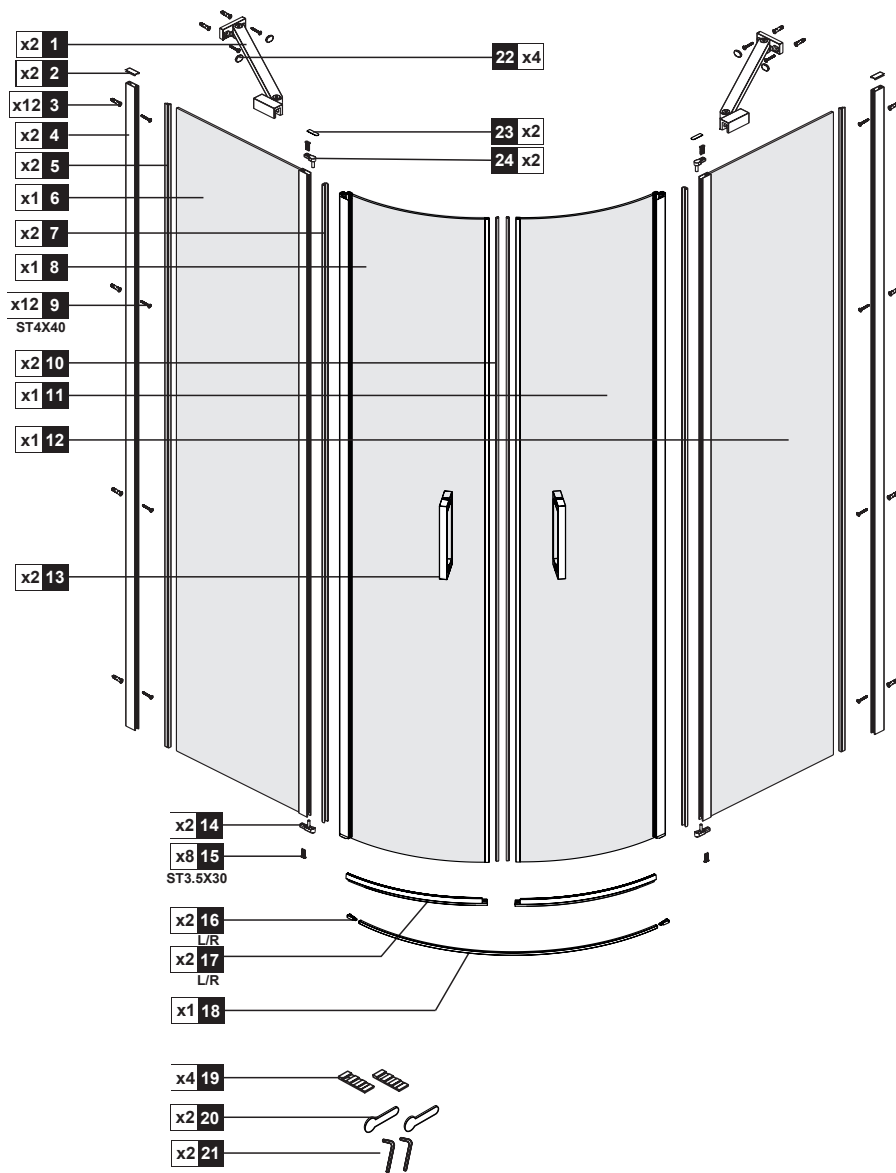


KAEX.3023 - str. 4

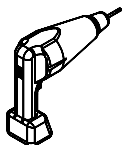


KAEX.3001 - str. 9

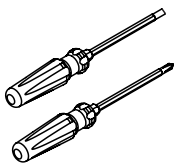




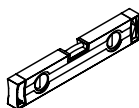
Potrzebne narzędzia



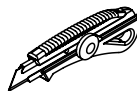
WIERTARKA



ŚRUBOKRĘT



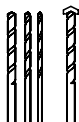
POZIOMICA



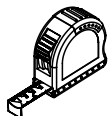
NÓŻ



SILIKON



WIERTŁO: 1/8", 3/16" ET 1/4"
*WIERTŁA MURARSKIE



TAŚMA MIERNICZA



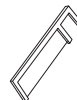
KĄTOWNICA



OLEŃWEK

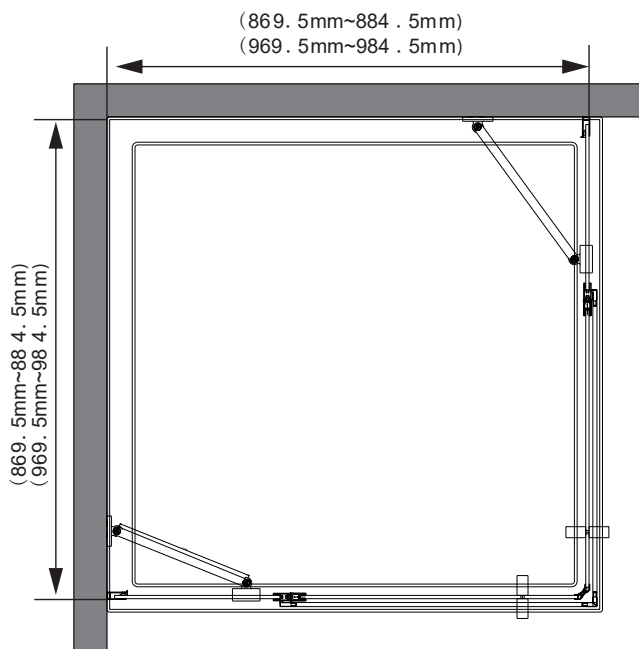


MŁOTEK

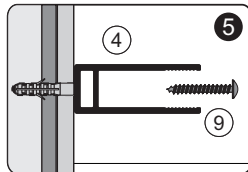
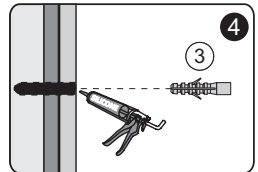
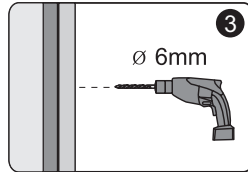
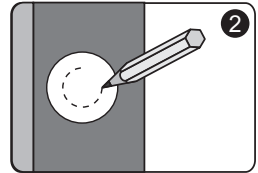
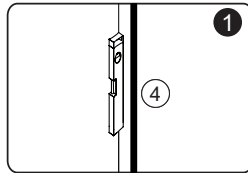
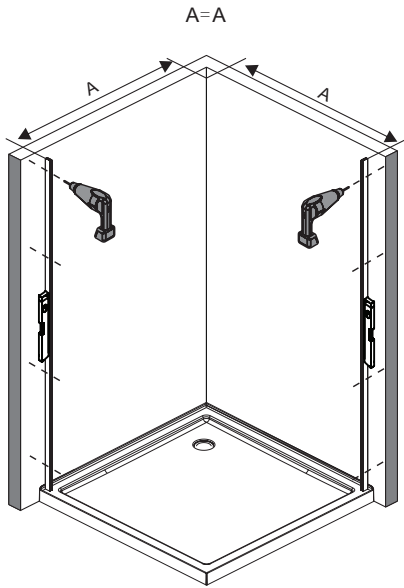


PIŁA

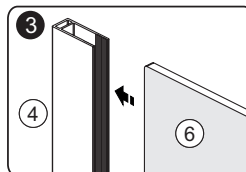
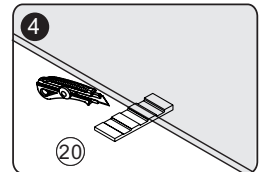
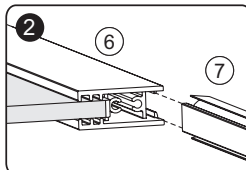
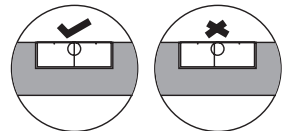
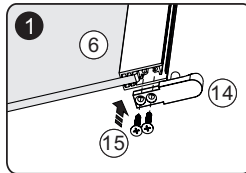
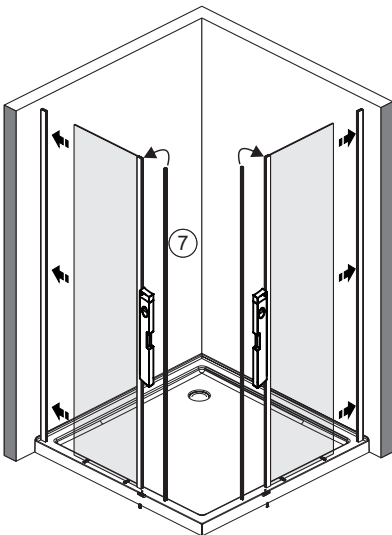
A 01 KAEX.3023



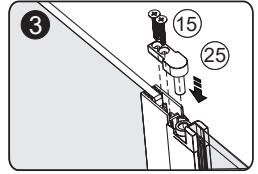
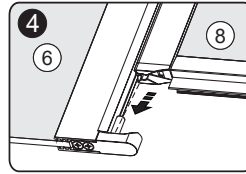
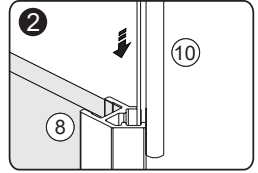
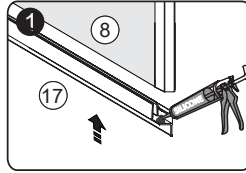
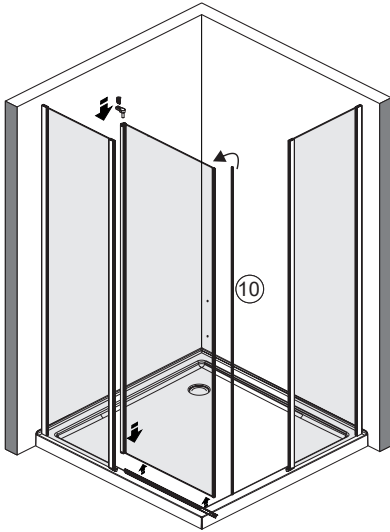
A 02



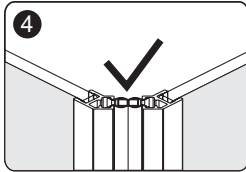
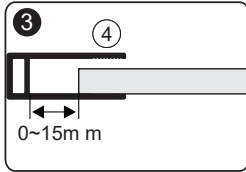
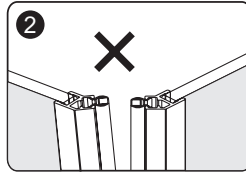
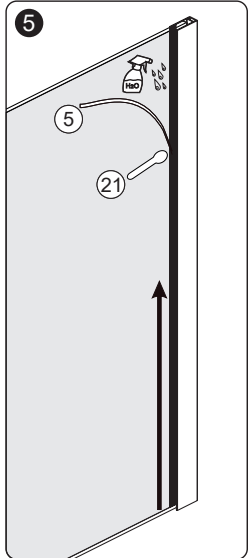
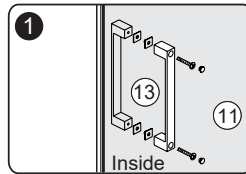
A 03



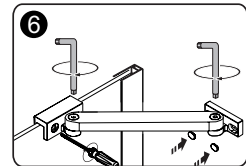
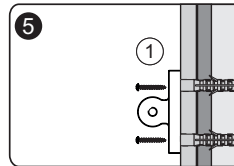
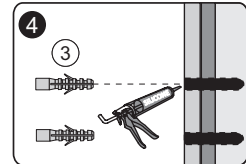
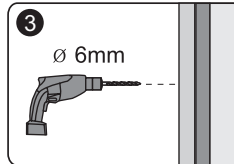
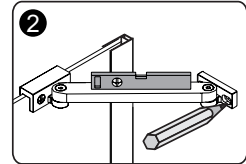
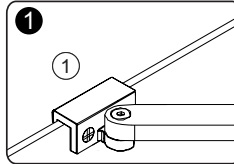
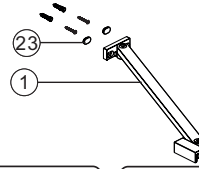
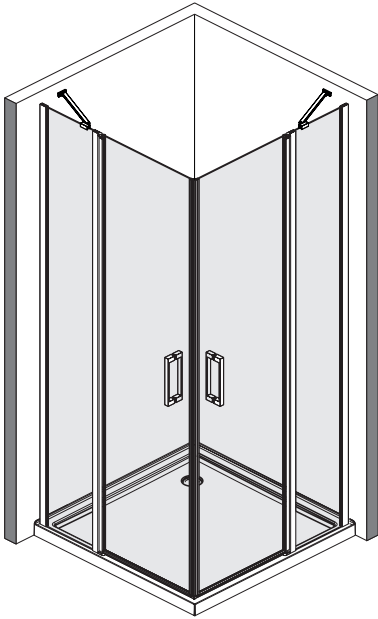
A 04



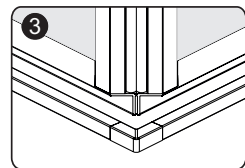
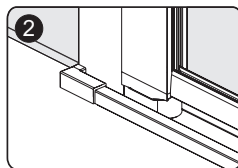
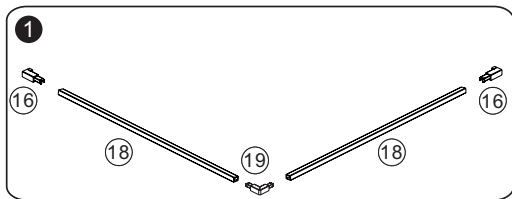
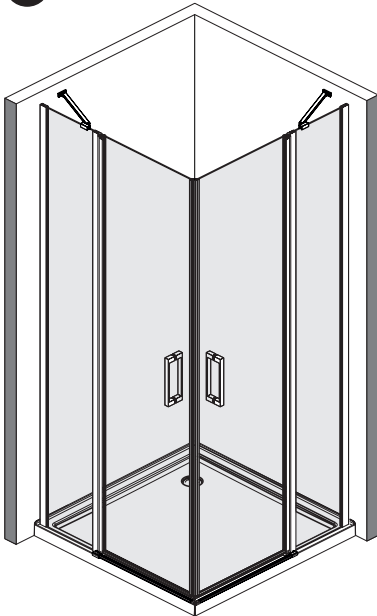
A 05



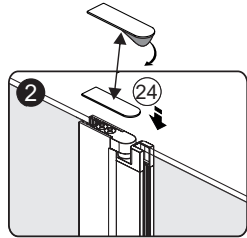
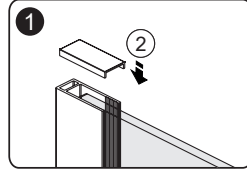
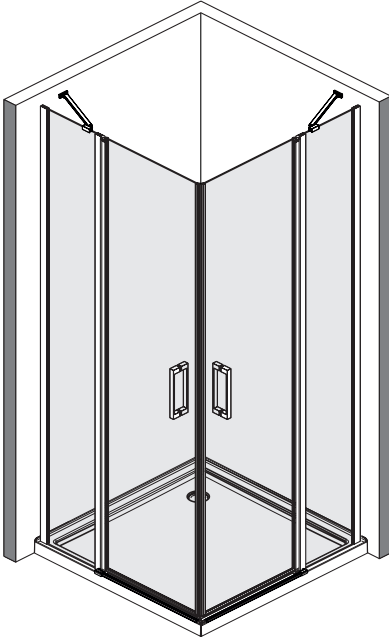
A₀₄



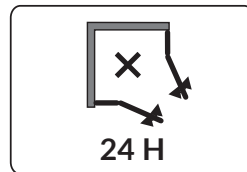
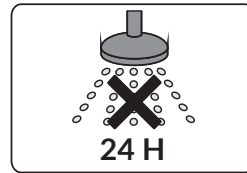
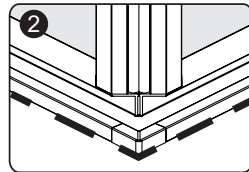
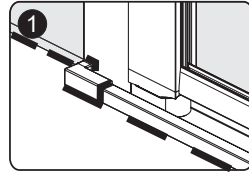
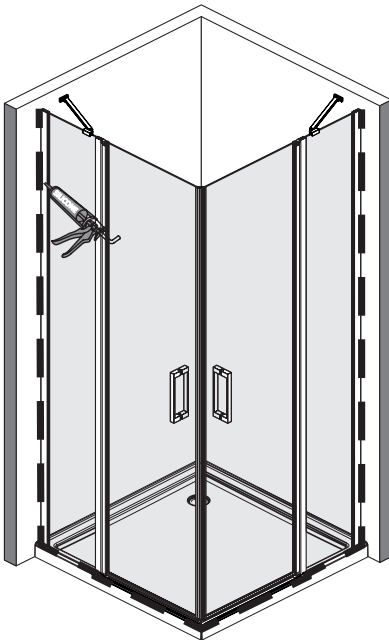
A₀₅



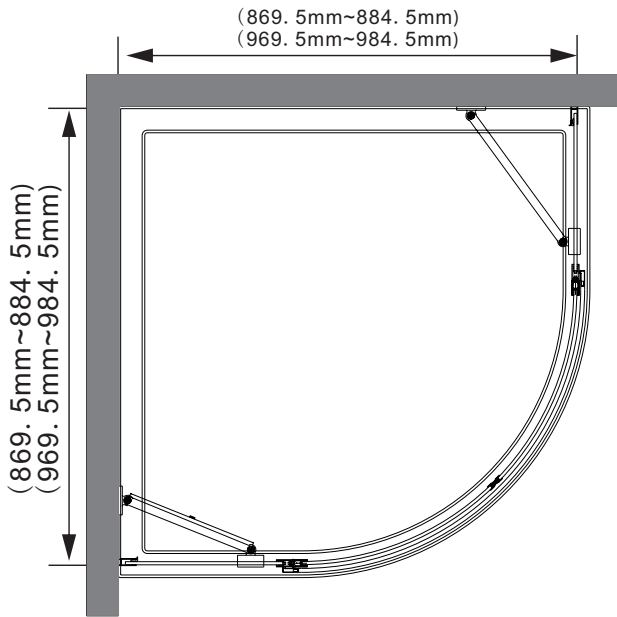
A 06



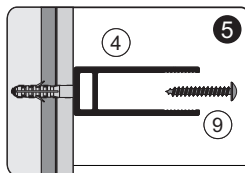
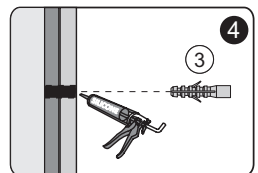
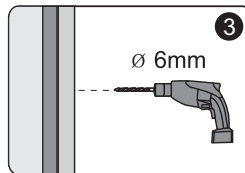
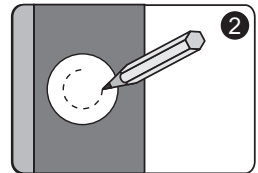
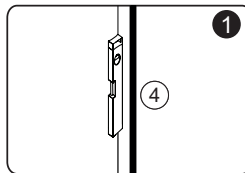
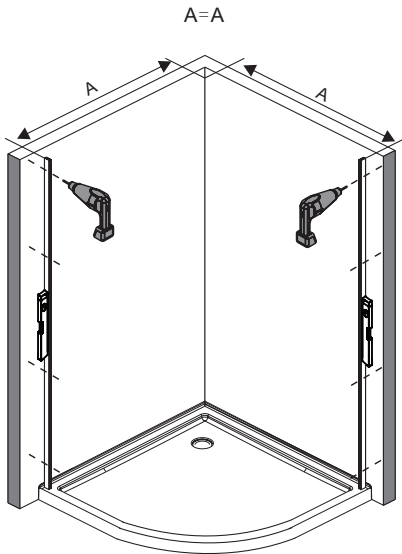
A 07



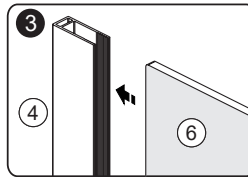
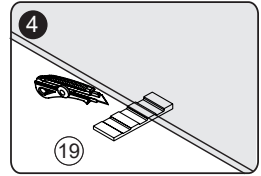
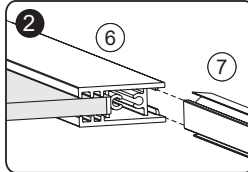
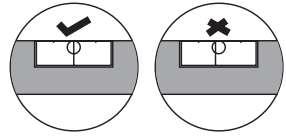
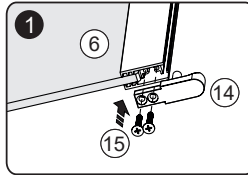
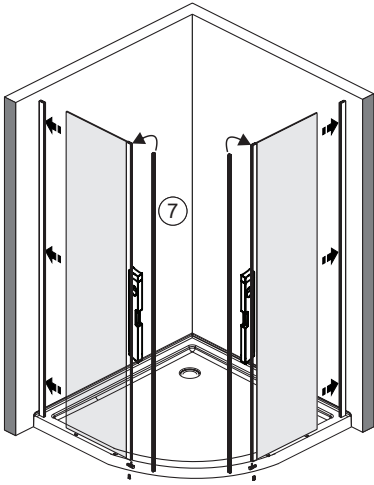
B₀₁ KAEX.3001



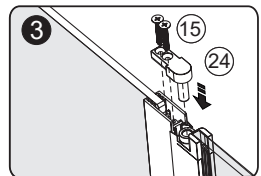
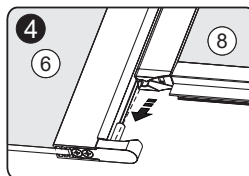
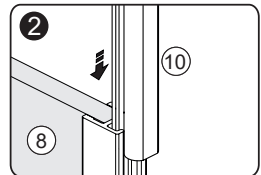
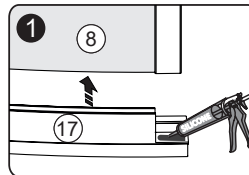
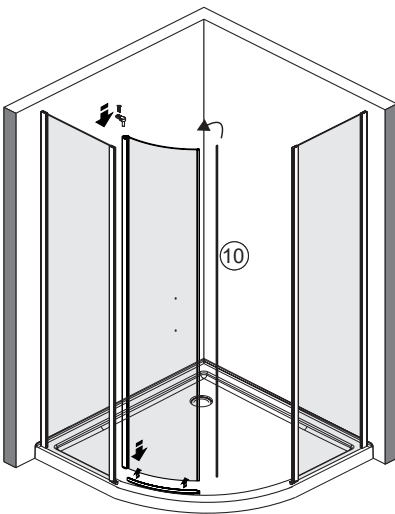
B₀₂



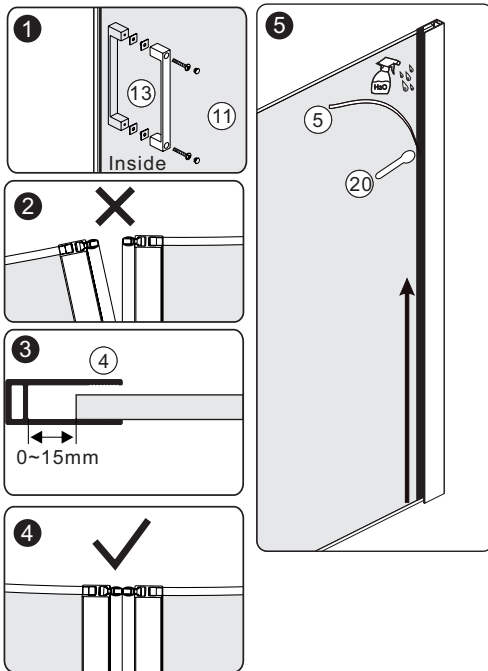
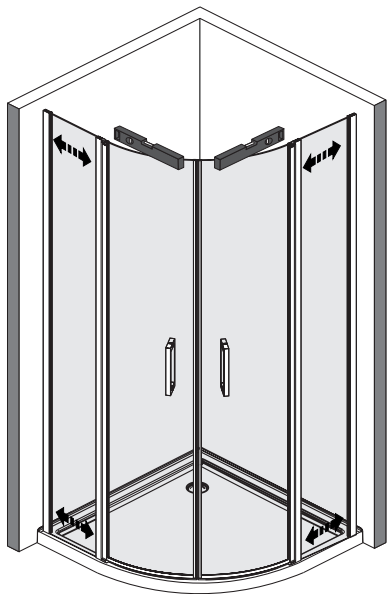
B₀₃



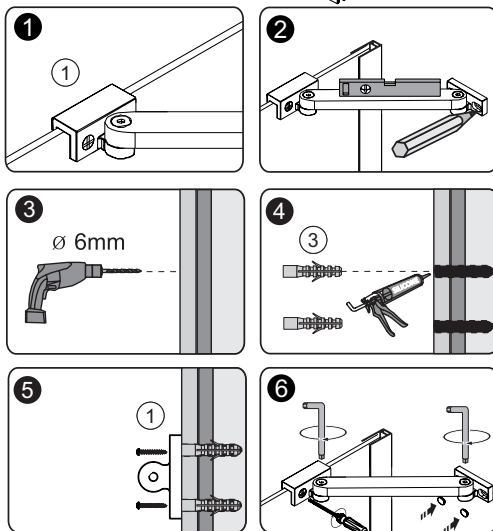
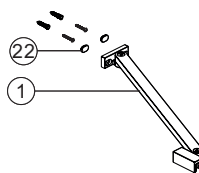
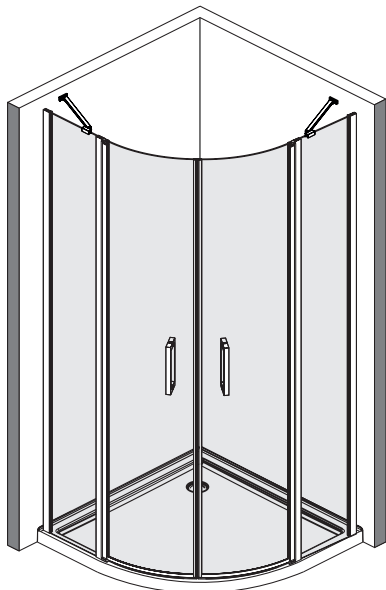
B₀₄



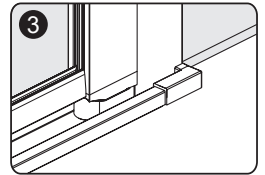
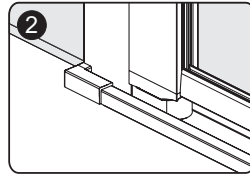
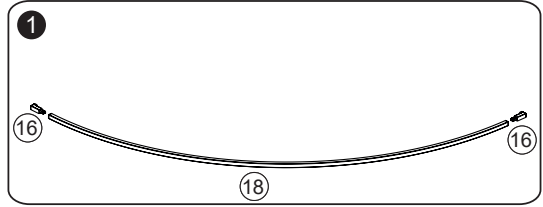
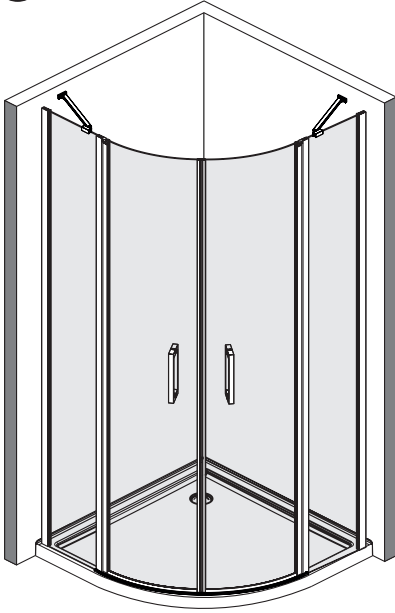
B₀₅



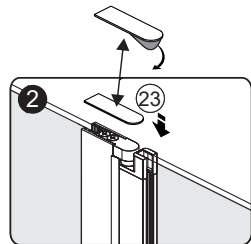
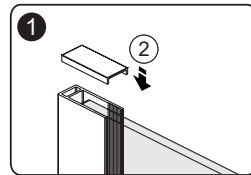
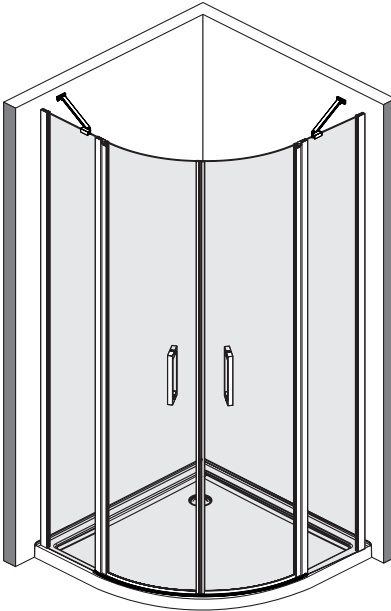
B₀₆



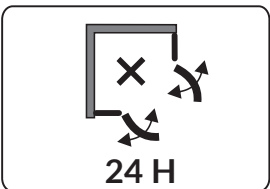
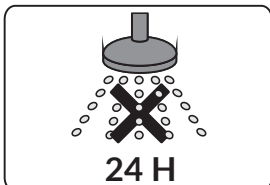
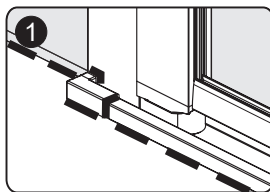
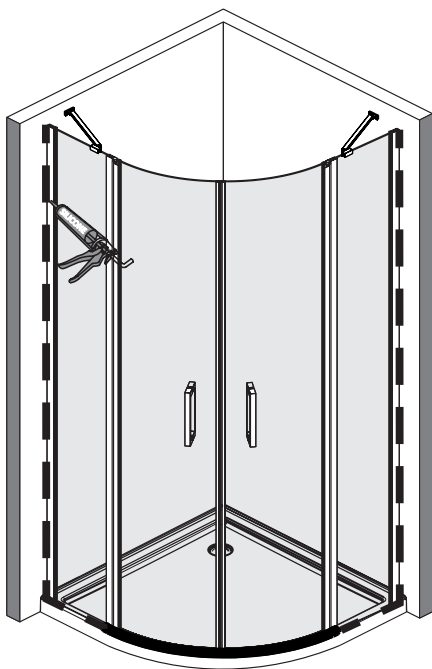
B 07



B 08



B 09



CZYSZCZENIE I KONSERWACJA

Aby utrzymać powierzchnię szkła kabiny w nienagannym stanie przez wiele miesięcy warto zastosować się do poniższych wskazówek:

- po każdej kąpeli należy sputkać wodą oraz ściągaczką do szyb lub miękką tkaniną i usunąć wodę z szyby,
- nie należy doo czyszczenia kabiny używać środków zawierających kwasy, aceton, formaldehydy czy też benzynę

GWARANCJA

Warunki gwarancji dostępne na stronie <http://www.excellent.com.pl/gwarancja>

EXCELLENT

Excellent SA
32-003 Podłęże 662

Tel.: 12 657 18 87
e-mail: lazienki@excellent.com.pl

www.excellent.com.pl